



# News Release

16:00 (UTC+8)  
December 9, 2021

Next Release: [January 11, 2022 at 16:00 \(UTC+8\)](#)

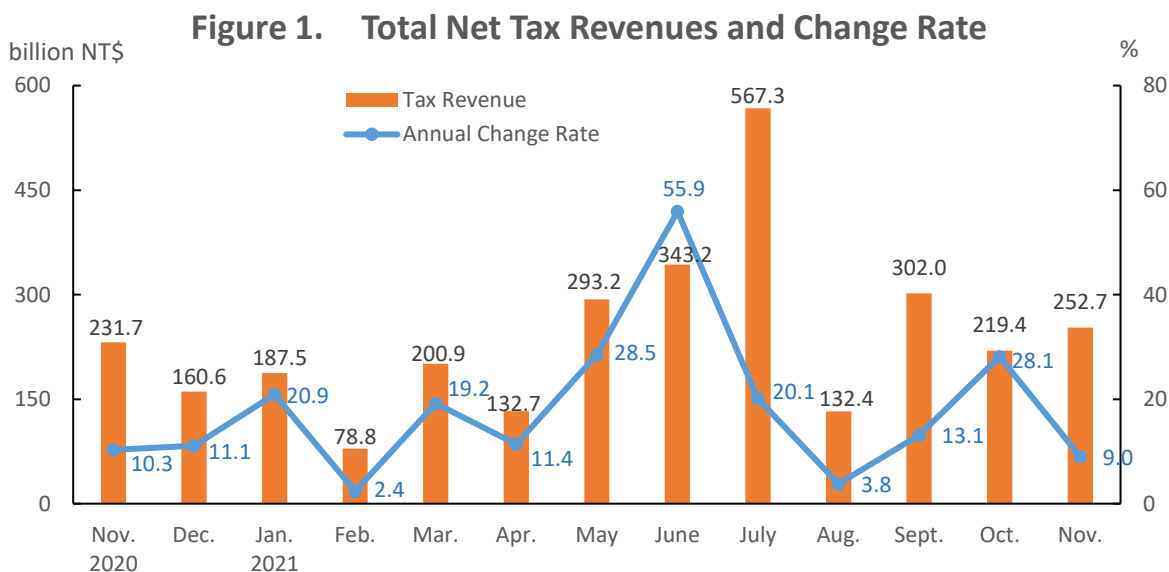
STATISTICS DEPT., MOF  
TEL: +886-2-2322-8343  
FAX: +886-2-2322-5250  
Email: [h2@mail.mof.gov.tw](mailto:h2@mail.mof.gov.tw)

## Preliminary Total Net Tax Revenue for November 2021



### Highlights

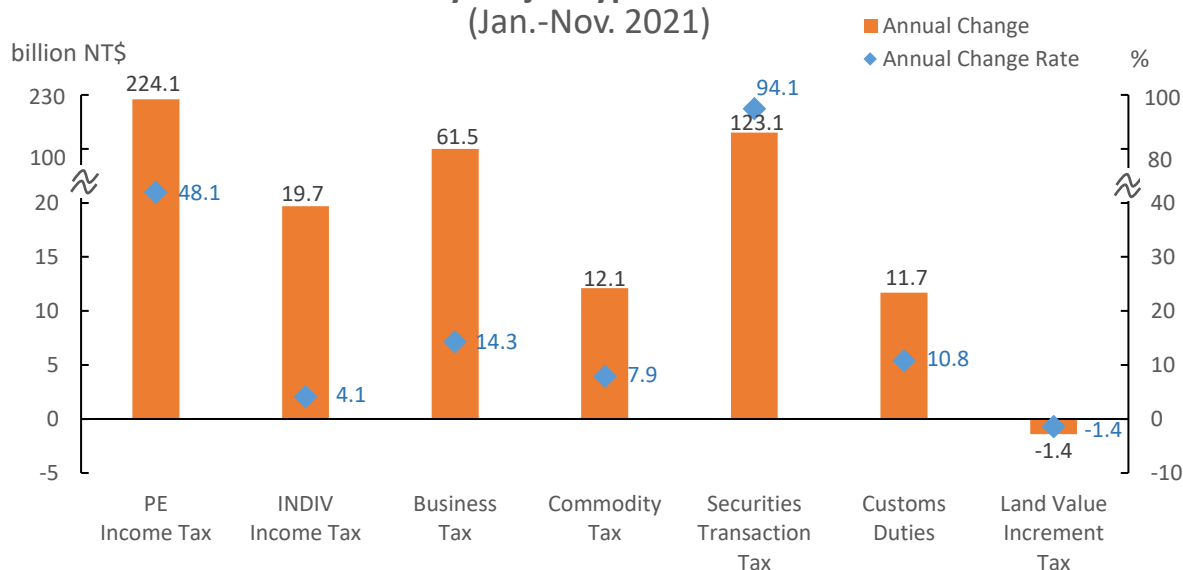
For the month of November 2021, total net tax revenue was NT\$ 252.7 billion, which is NT\$ 21.0 billion (+9.0%) more than the same month last year, while cumulative January to date was NT\$ 2,710.1 billion, NT\$ 472.0 billion (+21.1%) more than the same period last year. Total net tax revenue (Year to date, YTD) as of cumulative distributed budget was 118.2%.



### Changes in Major Types of Taxes

In YTD total net tax revenue (Jan.-Nov. 2021) compared with the same period of last year, Profit-seeking Enterprise Income Tax increased NT\$ 224.1 billion, Securities Transaction Tax increased NT\$ 123.1 billion, Business Tax increased NT\$ 61.5 billion, Individual Income Tax increased NT\$ 19.7 billion.

**Figure 2. Total Net Tax Revenue and Change Rate by Major Type of Tax (Jan.-Nov. 2021)**

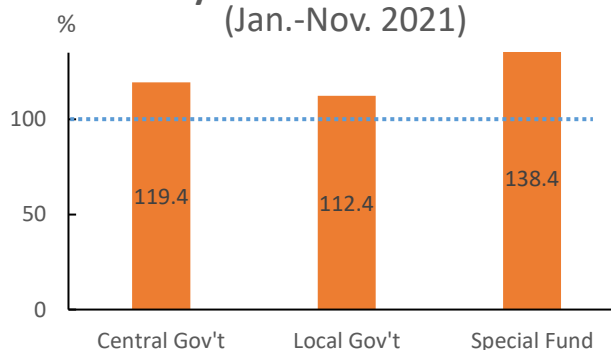


Explanation: PE Income Tax stands for Profit-seeking Enterprise Income Tax; INDIV Income Tax stands for Individual Income Tax.

### By Sectors of Government

For Central Government, total net tax revenue(YTD) was NT\$ 1,911.4 billion, which is NT\$ 394.1 billion(+26.0%) more than the same period last year; the budget achieving rate was 119.4%. For Local Government, total net tax revenue(YTD) was NT\$ 683.4 billion, which is NT\$ 59.6 billion (+9.6%) more than the same period last year; the budget achieving rate was 112.4%.

**Figure 3. Total Net Tax Revenue Budget Achieving Rate by Government Sector (Jan.-Nov. 2021)**



### List of News Release Tables

- Table1. Total Net Tax Revenues (Preliminary)
- Table2. Total Net Tax Revenues – by Government Sector (Preliminary)
- Table3. Net Tax Revenues of Central Government (Preliminary)
- Table4. Total Net Tax Revenues in Recent Years

Table1. Total Net Tax Revenues (Preliminary)

Nov. 2021

Unit : NT \$ Million : %

Tax	Current Month	Growth Value VS. Same Month Last Year	Growth Rate VS. Same Month Last Year	% of Monthly Distributed Budget	Cumulation Jan. to Date	Growth Value VS. Same Cumulation Jan. to Date Last Year	Growth Rate VS. Same Cumulation Jan. to Date Last Year	% of Cumulative Distributed Budget	% of Yearly Budget	Budget Amount of Current Year
Grand Total	252,674	20,957	9.0	123.5	2,710,064	471,985	21.1	118.2	111.0	2,441,466
Customs Duties	11,047	460	4.3	107.2	120,141	11,740	10.8	109.8	99.5	120,764
Income Tax	26,866	2,574	10.6	112.7	1,188,807	243,864	25.8	111.5	108.4	1,096,482
Profit-seeking Enterprise Income Tax	4,574	332	7.8	85.2	690,067	224,117	48.1	114.5	113.1	609,993
Individual Income Tax	22,292	2,242	11.2	120.7	498,740	19,747	4.1	107.6	102.5	486,489
Estate and Gift Tax	3,812	-1,605	-29.6	123.9	46,637	8,845	23.4	146.1	132.3	35,243
Estate Tax	2,555	-1,561	-37.9	138.7	29,707	3,074	11.5	155.4	140.9	21,091
Estate Tax (Undesignated)	1,974	-641	-24.5	130.6	22,342	2,623	13.3	142.4	129.1	17,311
Estate Tax (For Long-term Care Services Development Fund)	581	-920	-61.3	176.1	7,365	451	6.5	215.0	194.8	3,780
Gift Tax	1,257	-43	-3.3	101.7	16,930	5,770	51.7	132.3	119.6	14,152
Gift Tax (Undesignated)	1,013	-9	-0.9	99.7	13,077	3,737	40.0	124.3	112.4	11,632
Gift Tax (For Long-term Care Services Development Fund)	244	-35	-12.4	111.0	3,853	2,033	111.8	169.1	152.9	2,520
Commodity Tax	14,186	-253	-1.7	92.3	164,663	12,104	7.9	100.9	92.3	178,486
Securities Transaction Tax	23,876	10,030	72.4	223.5	253,842	123,085	94.1	232.2	211.5	119,995
Futures Transaction Tax	685	57	9.1	150.1	9,691	2,873	42.1	206.7	188.4	5,145
Tobacco and Alcohol Tax	6,105	304	5.2	110.4	63,538	-593	-0.9	107.5	98.3	64,650
Specifically Selected Goods and Services Tax	354	176	99.6	163.6	3,121	799	34.4	136.2	124.4	2,508
Business Tax	93,570	7,617	8.9	134.8	492,577	61,497	14.3	120.4	114.7	429,574
Business Tax (Undesignated)	89,805	7,283	8.8	135.6	466,970	60,107	14.8	120.7	115.3	405,118
Financial Enterprise Business Tax (For Financial Special Reserves)	3,765	334	9.7	119.5	25,608	1,390	5.7	115.1	104.7	24,456
Land Tax	64,051	939	1.5	107.8	158,100	943	0.6	111.4	83.9	188,422
Land Value Tax	54,486	2,465	4.7	108.4	58,547	2,315	4.1	108.2	65.2	89,820
Land Value Increment Tax	9,565	-1,526	-13.8	104.8	99,553	-1,373	-1.4	113.5	101.0	98,602
House Tax	447	-10	-2.2	102.5	82,852	4,237	5.4	103.8	103.3	80,176
Vehicle License Tax	922	214	30.2	114.1	66,714	695	1.1	102.3	101.6	65,636
Deed Tax	1,753	42	2.5	143.8	15,892	1,476	10.2	131.8	120.5	13,187
Stamp Tax	1,961	165	9.2	132.1	13,720	639	4.9	119.9	114.5	11,977
Amusement Tax	103	-46	-31.0	72.2	1,031	-517	-33.4	69.6	64.2	1,607
Special and Provisional tax levies	55	-14	-20.2	120.4	1,885	-251	-11.7	121.9	116.8	1,614
Education Surtax	-	-	--	--	-	0	-	--	--	-
Health and Welfare Surcharge on Tobacco	2,883	305	11.8	126.6	26,853	549	2.1	115.6	103.3	26,000

Explanation : 1.The total amount of using physical objects for payment of estate and gift taxes was NT\$140 million in Nov. 2021, the accumulated total amount was NT\$1,645 million as of this month.

2.The special and provisional tax levies includes the special tax levies and the provisional tax levies which are imposed on the disposal of construction surplus, mining and quarrying.

3.Certain of the details may not add up to the total due to rounding up of the figures.

Table2. Total Net Tax Revenues – by Government Sector (Preliminary)

Tax	Nov. 2021				Unit : NT \$ Million ; %				
	Current Month	Growth Value VS. Same Month Last Year	Growth Rate VS. Same Month Last Year	% of Monthly Distributed Budget	Cumulation Jan. to Date	Growth Value VS. Same Cumulation Jan. to Date Last Year	Growth Rate VS. Same Cumulation Jan. to Date Last Year	% of Yearly Budget	Budget Amount of Current Year
Grand Total	252,674	20,957	9.0	123.5	2,710,064	471,985	21.1	111.0	2,441,466
Central Government	129,249	18,310	16.5	129.2	1,911,380	394,115	26.0	113.9	1,678,542
Local Government (Incl. Allocation of Centrally-Funded Tax Revenues)	110,506	4,025	3.8	116.1	683,371	59,647	9.6	101.8	670,979
Special Fund	12,919	-1,377	-9.6	136.7	115,313	18,224	18.8	125.4	91,946
Financial Enterprises Business Tax (Financial Special Reserves)	3,765	334	9.7	119.5	25,608	1,390	5.7	104.7	24,456
Health and Welfare Surcharge on Tobacco	2,883	305	11.8	126.6	26,853	549	2.1	103.3	26,000
Long-term Care Services Development Fund	6,271	-2,016	-24.3	156.0	62,852	16,285	35.0	151.5	41,490
Estate Tax	581	-920	-61.3	176.1	7,365	451	6.5	194.8	3,780
Gift Tax	244	-35	-12.4	111.0	3,853	2,033	111.8	152.9	2,520
Tobacco Tax	2,883	321	12.5	144.6	26,878	539	2.0	115.4	23,300
Consolidated Housing and Land Income Tax	2,563	-1,383	-35.0	173.6	24,757	13,262	115.4	208.2	11,890
Profit-seeking Enterprise	-	-2,897	-	-	6,902	4,005	138.2	170.7	4,044
Individual	2,563	1,515	144.5	333.1	17,855	9,257	107.7	227.6	7,846

Explanation : Consolidated housing and land income tax shall be used for expenditures of housing policy and long-term social care services.

Table3. Net Tax Revenues of Central Government (Preliminary)

Tax	Nov. 2021				Unit : NT \$ Million ; %					
	Current Month	Growth Value VS. Same Month Last Year	Growth Rate VS. Same Month Last Year	% of Monthly Distributed Budget	Cumulation Jan. to Date	Growth Value VS. Same Cumulation Jan. to Date Last Year	Growth Rate VS. Same Cumulation Jan. to Date Last Year	% of Cumulative Distributed Budget	% of Yearly Budget	Budget Amount of Current Year
Grand Total	129,249	18,310	16.5	129.2	1,911,380	394,115	26.0	119.4	113.9	1,678,542
Customs Duties	11,047	460	4.3	107.2	120,141	11,740	10.8	109.8	99.5	120,764
Income Tax	21,616	3,699	20.6	108.2	1,045,169	206,216	24.6	110.2	107.2	974,944
Profit-seeking Enterprise Income Tax	4,116	3,196	347.4	99.8	614,158	197,700	47.5	114.0	112.7	544,950
Individual Income Tax	17,500	503	3.0	110.4	431,012	8,516	2.0	105.1	100.2	429,994
Estate and Gift Tax	1,366	-330	-19.5	115.7	16,105	2,627	19.5	131.3	119.0	13,537
Estate Tax	898	-324	-26.5	127.2	10,017	802	8.7	136.5	123.7	8,096
Gift Tax	468	-7	-1.5	98.5	6,088	1,825	42.8	123.6	111.9	5,441
Commodity Tax	12,767	-227	-1.7	92.3	148,196	10,894	7.9	100.9	92.3	160,637
Securities Transaction Tax	23,876	10,030	72.4	223.5	253,842	123,085	94.1	232.2	211.5	119,995
Futures Transaction Tax	685	57	9.1	150.1	9,691	2,873	42.1	206.7	188.4	5,145
Tobacco and Alcohol Tax	2,578	-13	-0.5	91.1	29,328	-905	-3.0	96.9	88.7	33,080
Specifically Selected Goods and Services Tax	354	176	99.6	163.6	3,121	799	34.4	136.2	124.4	2,508
Business Tax	54,961	4,457	8.8	135.6	285,785	36,785	14.8	120.7	115.3	247,932

Explanation : The total amount of using physical objects for payment of estate and gift taxes was NT\$47 million in Nov. 2021, the accumulated total amount was NT\$406 million as of this month.

Table4. Total Net Tax Revenues in Recent Years(1/4)

1.Value

Unit : NT \$ 100 Million

CY (Month)	Grand Total	Customs Duties	Income Tax			Estate and Gift Tax					Commodity Tax	Securities Transaction Tax	Futures Transaction Tax
			Subtotal	Profit-seeking Enterprise Income Tax	Individual Income Tax	Subtotal	Estate Tax	For Long-term Care Services Development Fund	Gift Tax	For Long-term Care Services Development Fund			
2010	16,222	895	5,904	2,857	3,047	403	313	-	91	-	1,508	1,046	46
2011	17,646	963	7,102	3,672	3,430	237	158	-	78	-	1,649	940	59
2012	17,967	949	7,608	3,677	3,931	283	193	-	90	-	1,609	719	43
2013	18,341	970	7,433	3,511	3,922	237	141	-	97	-	1,625	714	27
2014	19,761	1,071	8,135	4,026	4,109	254	135	-	120	-	1,729	887	29
2015	21,349	1,110	9,367	4,628	4,739	327	184	-	144	-	1,831	820	38
2016	22,241	1,150	10,064	5,104	4,960	475	255	-	220	-	1,819	709	37
2017	22,512	1,150	9,864	5,033	4,831	511	212	0	299	2	1,785	900	42
2018	23,869	1,201	10,771	5,679	5,091	318	214	22	104	13	1,801	1,012	61
2019	24,705	1,230	11,488	6,479	5,009	349	243	50	106	16	1,769	912	47
2020	23,987	1,214	9,817	4,771	5,047	423	296	75	127	21	1,702	1,506	75
Nov.	2,317	106	243	42	200	54	41	15	13	3	144	138	6
Dec.	1,606	130	368	111	257	45	30	6	15	2	177	199	7
Jan. to Nov. 2021	27,101	1,201	11,888	6,901	4,987	466	297	74	169	39	1,647	2,538	97
Jan.	1,875	100	309	17	293	33	19	4	14	1	137	212	9
Feb.	788	92	308	28	280	27	15	4	12	2	152	128	7
Mar.	2,009	118	352	38	315	47	30	9	17	3	142	220	10
Apr.	1,327	113	180	-106	286	52	39	12	13	2	160	244	7
May	2,932	120	510	216	294	39	27	8	12	2	170	294	13
June	3,432	112	2,389	2,034	355	61	23	3	39	16	164	270	8
July	5,673	125	3,866	2,306	1,560	56	39	10	17	4	158	341	10
Aug.	1,324	101	654	106	549	34	26	6	9	1	144	245	9
Sept.	3,020	105	1,488	1,054	434	46	33	10	13	3	145	178	8
Oct.	2,194	105	1,563	1,163	401	32	21	3	11	2	132	169	8
Nov. p	2,527	110	269	46	223	38	26	6	13	2	142	239	7
Growth Value VS. Same Month Last Year	210	5	26	3	22	-16	-16	-9	-0	-0	-3	100	1
Growth Value VS. Same Cumulation Jan. to Date Last Year	4,720	117	2,439	2,241	197	88	31	5	58	20	121	1,231	29

Explanation : 1.The specifically selected goods and services tax was imposed from June 2011.

2.Estate and Gift Tax, Tobacco and Alcohol Tax, both include revenues for Long-term Care Services Development Fund; Financial enterprises business tax refers to financial special reserves; Other Taxes include Amusement Tax, Special and Provisional Tax Levies and Education Surtax.

Table4. Total Net Tax Revenues in Recent Years(2/4)

1.Value

Unit : NT \$ 100 Million

CY (Month)	Tobacco and Alcohol Tax	For Long-term Care Services Development Fund	Specifically Selected Goods and Services Tax	Business Tax	Financial Enterprise Business Tax	Land Value Tax	Land Value Increment Tax	House Tax	Vechicle License Tax	Deed Tax	Stamp Tax	Health and Welfare Surcharge on Tobacco	Other Tax
2010	445	-	-	2,898	216	630	733	582	541	138	89	348	16
2011	447	-	22	3,077	238	634	786	595	554	126	94	346	17
2012	449	-	43	3,065	247	627	811	618	565	117	100	344	16
2013	448	-	53	3,280	249	708	1,033	630	578	136	104	351	16
2014	438	-	54	3,607	256	715	1,017	647	593	125	106	329	24
2015	442	-	42	3,609	251	711	1,135	694	617	138	113	331	23
2016	456	-	28	3,784	237	939	834	730	630	114	106	344	23
2017	502	57	23	3,850	231	948	939	767	641	128	111	322	31
2018	696	283	25	4,154	245	919	906	786	648	134	121	282	36
2019	686	278	27	4,209	262	919	1,011	810	656	148	129	277	37
2020	715	295	27	4,372	266	918	1,130	793	663	161	137	294	39
Nov.	58	26	2	860	34	520	111	5	7	17	18	26	2
Dec.	73	32	3	61	24	355	121	7	2	17	6	31	2
Jan. to Nov. 2021	635	269	31	4,926	256	585	996	829	667	159	137	269	29
Jan.	55	23	2	833	37	6	105	3	10	16	18	23	3
Feb.	58	24	2	-106	0	2	70	3	7	10	4	24	2
Mar.	49	18	3	872	39	5	98	4	34	16	17	18	7
Apr.	59	24	3	-0	-0	3	84	21	354	15	6	24	3
May	61	25	3	855	38	3	109	498	196	17	17	25	2
June	60	26	3	-63	3	1	93	253	33	15	6	26	1
July	54	23	4	878	62	1	91	26	7	12	19	23	1
Aug.	58	24	3	-67	-0	2	84	7	5	12	6	24	1
Sept.	56	24	2	848	40	2	71	5	5	14	18	24	6
Oct.	65	28	3	-59	0	16	96	4	7	16	7	28	1
Nov. p	61	29	4	936	38	545	96	4	9	18	20	29	2
Growth Value VS. Same Month Last Year	3	3	2	76	3	25	-15	-0	2	0	2	3	-1
Growth Value VS. Same Cumulation Jan. to Date Last Year	-6	5	8	615	14	23	-14	42	7	15	6	5	-8

Table4. Total Net Tax Revenues in Recent Years(3/4)

2.Growth Rate

Unit : %

CY (Momth)	Grand Total	Customs Duties	Income Tax			Estate and Gift Tax					Commodity Tax	Securities Transaction Tax	Futures Transaction Tax
			Subtotal	Profit-seeking Enterprise Income Tax	Individual Income Tax	Subtotal	Estate Tax	For Long-term Care Services Development Fund	Gift Tax	For Long-term Care Services Development Fund			
2010	6.0	30.0	-7.9	-14.5	-0.7	80.6	81.5	--	77.7	--	17.9	-1.3	21.5
2011	8.8	7.6	20.3	28.5	12.6	-41.3	-49.3	--	-13.8	--	9.4	-10.1	28.6
2012	1.8	-1.5	7.1	0.2	14.6	19.5	21.6	--	15.3	--	-2.4	-23.5	-26.7
2013	2.1	2.2	-2.3	-4.5	-0.2	-16.1	-27.0	--	7.2	--	1.0	-0.8	-37.9
2014	7.7	10.4	9.4	14.7	4.8	7.2	-4.4	--	24.3	--	6.4	24.3	7.2
2015	8.0	3.6	15.2	14.9	15.4	28.7	36.5	--	19.9	--	5.9	-7.5	32.2
2016	4.2	3.6	7.4	10.3	4.6	45.1	38.9	--	53.2	--	-0.7	-13.6	-2.1
2017	1.2	-0.0	-2.0	-1.4	-2.6	7.5	-16.9	--	35.7	--	-1.9	27.0	13.1
2018	6.0	4.4	9.2	12.8	5.4	-37.7	0.9	4,418.0	-65.1	696.6	0.9	12.5	45.6
2019	3.5	2.5	6.7	14.1	-1.6	9.7	13.7	127.5	1.7	18.6	-1.8	-9.9	-23.0
2020	-2.9	-1.3	-14.5	-26.4	0.7	21.1	22.0	49.8	19.1	29.7	-3.8	65.2	60.5
Nov.	10.3	0.2	14.4	5.9	16.3	62.0	76.6	170.9	28.5	25.7	-1.2	55.5	55.7
Dec.	11.1	0.1	5.6	-1.8	9.2	26.9	14.6	4.2	62.0	254.8	5.5	121.0	62.9
Jan. to Nov. 2021	21.1	10.8	25.8	48.1	4.1	23.4	11.5	6.5	51.7	111.8	7.9	94.1	42.1
Jan.	20.9	15.3	-4.4	31.7	-5.9	63.8	73.9	32.9	52.0	-27.9	9.9	203.8	169.0
Feb.	2.4	5.3	3.6	--	-15.9	-5.8	-21.1	1.5	23.1	106.0	-4.4	53.8	14.0
Mar.	19.2	10.3	27.6	-31.1	42.2	53.4	47.1	94.5	66.0	178.2	9.2	77.6	-11.7
Apr.	11.4	12.7	-35.5	--	-2.4	59.5	63.6	198.2	48.3	107.9	11.5	159.7	32.3
May	28.5	32.5	30.3	52.3	17.8	27.8	20.7	55.8	46.8	20.0	36.0	157.9	145.8
June	55.9	14.4	73.1	51.6	814.1	53.3	-28.6	-63.4	370.1	1,518.3	21.9	115.3	58.6
July	20.1	19.9	19.3	77.7	-19.8	31.5	23.6	7.4	54.4	117.9	15.0	93.7	43.6
Aug.	3.8	-0.1	-2.9	6.4	-4.5	7.9	7.9	-8.2	8.0	13.2	7.6	67.5	48.6
Sept.	13.1	1.5	25.6	20.5	40.0	17.3	24.9	37.7	1.3	-2.0	2.7	28.5	10.2
Oct.	28.1	5.4	34.8	37.6	27.1	18.0	39.3	25.0	-8.6	-19.5	-12.9	71.1	74.2
Nov.	9.0	4.3	10.6	7.8	11.2	-29.6	-37.9	-61.3	-3.3	-12.4	-1.7	72.4	9.1



Table4. Total Net Tax Revenues in Recent Years(4/4)

2.Growth Rate

Unit : %

CY (Month)	Tobacco and Alcohol Tax	For Long-term Care Services Development Fund	Specifically Selected Goods and Services Tax	Business Tax	Financial Enterprise Business Tax	Land Value Tax	Land Value Increment Tax	House Tax	Vechicle License Tax	Deed Tax	Stamp Tax	Health and Welfare Surcharge on Tobacco	Other Tax
2010	-1.8	--	--	18.1	-1.2	6.8	37.5	3.3	1.9	5.7	5.7	39.7	-1.8
2011	0.3	--	--	6.2	10.2	0.5	7.2	2.2	2.5	-8.5	5.1	-0.5	2.5
2012	0.6	--	93.8	-0.4	3.8	-1.0	3.2	3.9	2.1	-7.5	6.5	-0.7	-6.5
2013	-0.4	--	24.4	7.0	0.9	12.9	27.3	2.0	2.2	16.0	3.7	2.1	4.2
2014	-2.1	--	1.6	10.0	2.7	1.0	-1.5	2.6	2.7	-7.6	2.6	-6.2	47.9
2015	0.8	--	-22.4	0.1	-1.8	-0.5	11.6	7.3	4.0	10.3	6.0	0.6	-4.6
2016	3.3	--	-32.6	4.8	-5.5	32.0	-26.5	5.1	2.2	-17.7	-5.7	3.8	0.5
2017	10.1	--	-18.0	1.8	-2.6	0.9	12.6	5.2	1.7	12.4	4.3	-6.4	35.1
2018	38.6	393.5	6.8	7.9	5.8	-3.1	-3.5	2.4	1.2	4.5	9.4	-12.4	13.8
2019	-1.4	-1.6	10.6	1.3	6.9	0.0	11.7	3.0	1.2	10.5	5.8	-1.7	4.2
2020	4.1	6.1	-3.0	3.9	1.8	-0.2	11.7	-2.0	1.0	9.3	6.8	6.2	5.5
Nov.	2.2	5.2	-16.7	9.1	-10.8	2.1	27.0	75.3	-15.9	36.4	9.3	6.0	8.3
Dec.	8.4	10.3	22.2	-29.6	22.2	-1.3	22.7	134.3	12.3	21.0	34.0	9.7	13.3
Jan. to Nov. 2021	-0.9	2.0	34.4	14.3	5.7	4.1	-1.4	5.4	1.1	10.2	4.9	2.1	-20.8
Jan.	-16.6	-22.1	193.8	17.7	-1.5	-32.4	52.7	58.0	14.5	55.2	7.5	-21.6	19.3
Feb.	30.4	44.4	-22.3	--	-6.7	-17.3	-22.8	25.6	-6.3	-9.3	-6.6	44.4	-17.6
Mar.	10.0	4.8	92.6	11.1	-1.9	41.0	14.5	42.1	6.8	29.2	1.4	4.7	-11.7
Apr.	4.7	6.5	15.9	--	--	37.5	12.1	3.8	-3.5	38.1	15.6	6.3	53.9
May	11.4	11.1	67.9	19.0	4.2	32.5	25.3	15.3	9.9	63.8	3.6	11.2	7.9
June	1.0	9.6	40.7	--	15.4	-19.7	0.2	-9.2	-3.4	18.6	-5.1	9.5	-40.6
July	-12.5	-5.0	19.5	16.7	11.3	-32.9	-7.8	-8.2	-16.0	-23.4	6.9	-5.0	-62.7
Aug.	-8.1	-9.3	33.6	--	--	25.7	-8.6	13.4	-3.0	-17.3	-2.1	-9.1	-63.6
Sept.	-13.4	-5.9	3.1	5.4	10.3	-38.2	-33.5	-9.6	40.0	-12.6	3.9	-5.6	-20.7
Oct.	-5.5	-1.6	3.9	--	-29.1	2.3	-6.6	13.4	-17.2	8.3	11.8	-1.6	-53.2
Nov.	5.2	12.5	99.6	8.9	9.7	4.7	-13.8	-2.2	30.2	2.5	9.2	11.8	-27.5